

**THE BOARD OF EDUCATION OF SCHOOL DISTRICT 68**  
**EDUCATION COMMITTEEMEETING**  
**AGENDA**

**Wednesday, November 6, 2024, 6:00 PM**  
**ONLINE MICROSOFT TEAMS MEETING**

Please note that the proceedings of this meeting are being recorded to assist in the preparation of the minutes of the meeting. The recording of this meeting are records of the School District, as defined in the Freedom of Information and Protection of Privacy Act, and as such may be the subject of access requests under the Act.

---

**Pages**

**1. CALL TO ORDER**

The Chair will call the meeting to order. With great respect and humility, we acknowledge and honour the lands of the Snuneymuxw people. The Snuneymuxw people maintain their profound, unique and spiritual connection to the land through ageless traditions, teachings, stewardship and expressions of reciprocity.

**2. ADDITIONS TO THE AGENDA**

**3. DELETIONS TO THE AGENDA**

**4. CHANGE IN ORDER**

**5. APPROVAL OF THE AGENDA**

*That the Agenda be approved.*

**6. APPROVAL OF THE MINUTES**

*That the minutes from the Education Committee meeting held on October 2, 2024, be approved.*

**7. PRESENTATIONS**

**8. SENIOR STAFF REPORTS**

**3**

8.1 Laura Tait, Deputy Superintendent 6

Presentation on the Board's Goal of Student & Employee Wellness.

Objective: Increase the number of students who feel welcome, safe and have a sense of belonging in their school.

School presentations by: Dover Bay Secondary and Seaview Elementary

8.2 Laura Tait, Deputy Superintendent 8

Re: Student Learning Survey & Ministry of Education and Child Care Data Site

**9. CORRESPONDENCE REFERRED FROM THE REGULAR BOARD MEETING**

**10. UNFINISHED BUSINESS**

**11. NEW BUSINESS**

**12. QUESTION PERIOD**

Question Period is intended to enable the public to obtain clarifying information regarding a current agenda item.

Individuals wishing to ask questions of the Board upon completion of Committee and Board sessions shall do so in writing on the form provided which includes their name, street address and email address. The individual will be asked to verify his/her self and be afforded the opportunity to read out their own question. Each individual shall be limited to one follow-up question upon receiving a response. Forms are available in the information rack near the entrance of the Board Room.

If the meeting is being held online, individuals wishing to ask questions of the Board shall type their question in the Q&A compose box on the right side of the screen and then select send. Your question will be read by the Board or Committee Chair.

Questions and responses will be included in the video of the meeting and the meeting minutes and will be part of the public record.

**13. ADJOURNMENT**

*That the meeting be adjourned.*

**THE BOARD OF EDUCATION OF SCHOOL DISTRICT 68**  
**MINUTES OF THE EDUCATION COMMITTEE MEETING**

**October 2, 2024**

Trustees	C. Morvay, Chair T. Brzovic, Vice Chair N. Bailey G. Keller M. Robinson T. Rokeby T. Harris
Absent	L. Lee L. Pellegrin
Staff	M. Walsh, Secretary-Treasurer L. Tait, Deputy Superintendent K. Matthews, Manager Admin. Services G. Robinson, Ex Dir of Communications P. Langstraat, Interim Superintendent
Representatives	NDTA Representative: Chris Perrier-Evely NSAA Representative: Brett Hancock

**1. CALL TO ORDER**

The Chair called the meeting to order at 6:04 pm.

**2. ADDITIONS TO THE AGENDA**

There were none.

**3. DELETIONS TO THE AGENDA**

There was none.

**4. CHANGE IN ORDER**

There was no change in order.

5. **APPROVAL OF THE AGENDA**

E24/10/02-01

IT WAS MOVED BY Trustee Keller

IT WAS SECONDED BY Trustee Brzovic

That the Agenda be approved.

**CARRIED UNANIMOUSLY**

6. **APPROVAL OF THE MINUTES**

E24/10/02-02

IT WAS MOVED BY Trustee Bailey

IT WAS SECONDED BY Trustee Rokeby

That the minutes from the Education Committee meeting held on September 4, 2024, be approved.

**CARRIED UNANIMOUSLY**

7. **PRESENTATIONS**

8. **SENIOR STAFF REPORTS**

8.1 Kerri Steel, Director of Instruction and Shawn Johnston, Executive Director of HR

Re: Accessibility Committee Workplan 2024-2025

Kerri Steel presented the NLPS Accessibility Committee's workplan. An information sheet, together with the workplan is attached to the Agenda.

E24/10/02-03

IT WAS MOVED BY Trustee Brzovic

IT WAS SECONDED BY Trustee Harris

The Education Committee recommends that the Board of Education of School District No. 68 (Nanaimo-Ladysmith) direct the superintendent to ensure that, going forward, all communications, reports and website content produced by the District replace the terms "special needs", "differences", etc with "disabilities/diverse abilities", except where the District is quoting specific legislation, Ministerial Orders and/or Ministerial instructions.

**CARRIED UNANIMOUSLY**

8.2 Don Balcombe, Assistant Superintendent and Jacquie Poulin, Assistant Superintendent

Re: School Start Up

Don Balcombe and Jacquie Poulin provided an update on school start-up. An information sheet is attached to the Agenda.

**9. CORRESPONDENCE REFERRED FROM THE REGULAR BOARD MEETING**

There was none.

**10. UNFINISHED BUSINESS**

There was none.

**11. NEW BUSINESS**

There was none.

**12. QUESTION PERIOD**

There were no questions.

**13. ADJOURNMENT**

Chair Morvay advised that October is Down Syndrome, ADHD and Dyslexia awareness month.

The meeting adjourned at 7:18 pm.

E24/10/02-04

IT WAS MOVED BY Trustee Harris

IT WAS SECONDED BY Trustee Rokeby

That the meeting be adjourned.

**CARRIED UNANIMOUSLY**



**NANAIMO LADYSMITH PUBLIC SCHOOLS  
EDUCATION COMMITTEE  
PUBLIC MEETING  
INFORMATION SHEET**

DATE: November 6<sup>th</sup>, 2024  
TO: Education Committee  
FROM: Kirstin Funke Robinson, Director of Instruction & Shawn Shahi, District Principal  
SUBJECT: Multi-Tiered System of Supports for Student Mental Health

---

**Board of Education Strategic Plan – Board Goal**

**Student and Employee Wellness**

**Objective:**

- Increase the number of students who feel welcome, safe, and have a sense of belonging in their school.

**Background**

To facilitate the Board’s strategic plan goal to increase student wellness, our district provides a continuum of supports designed to improve student mental health. The Multi-Tiered System of Supports (MTSS) framework is an evidence-based educational strategy designed to enhance student success through early identification and timely provision of high-quality interventions. This framework is the foundation in our district for both literacy and numeracy, as well as social, emotional, and behavioural supports.

MTSS begins with proactive gathering and review of data to help schools identify and support students as needed and continues with ongoing review of progress monitoring data. Visually, MTSS is often displayed as a triangle, with 3 separate levels, or “tiers”. The tiers of support for student mental health in NLPS are described below:

**Tier 1: Universal Supports (Primary Prevention)**

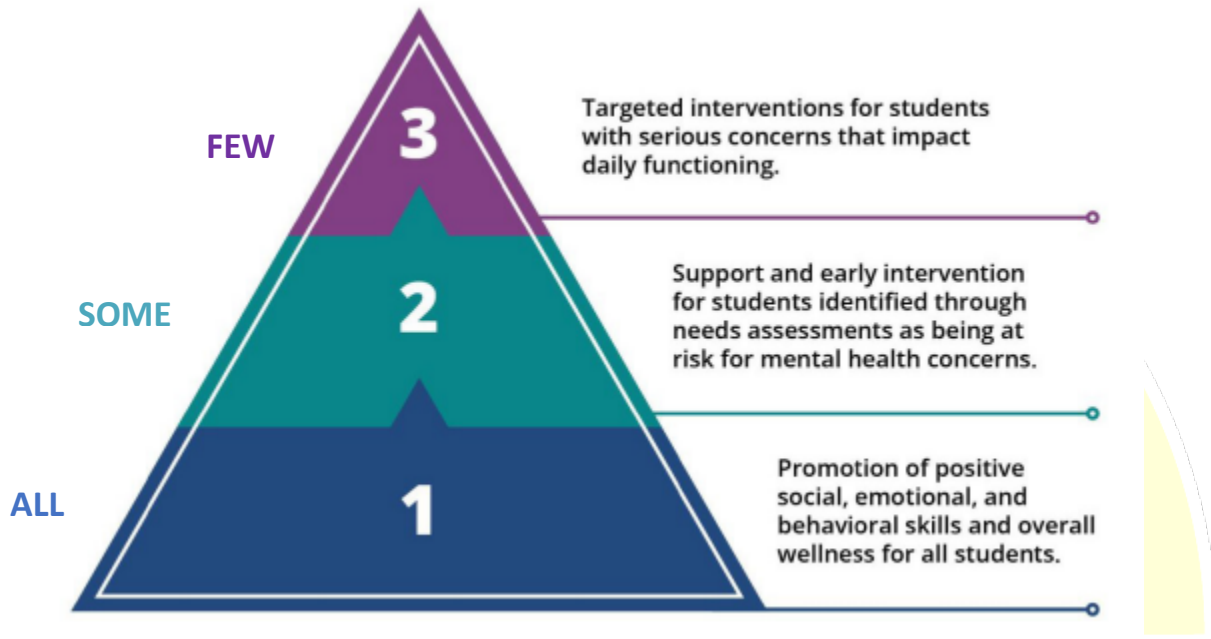
All students receive high-quality instruction and support in a positive school environment. Examples of universal supports include classroom social-emotional learning (SEL) programs, positive behavior intervention strategies, and school community-building activities.

**Tier 2: Targeted Supports (Secondary Prevention)**

Additional or specialized support beyond Tier 1, possibly in a small group setting, is provided to students who require it. Examples of targeted supports include focused social-emotional learning or skill-building programs that are often provided by staff other than classroom teachers, including counsellors, Child, Youth, Family Support Workers, or collaborative facilitation involving community partner agencies.

**Tier 3: Intensive Supports (Tertiary Prevention)**

Individualized support beyond Tier 2, likely in a one-on-one setting, is provided to students who require it. Examples of intensive supports include interventions planned by multi-disciplinary, specialized school-based team members (e.g., counsellors), as well as services provided by community-based professionals.



Promoting Mental Health and Well-Being in Schools: An action Guide for School and District Leaders - Center for Disease Control and Prevention (December 2023)

**Discussion**

In the 2024-25 school year, we have added a District Principal of Safe Schools and Wellness and increased the Mental Health Coordinator position from 0.6 to 1.0 full-time equivalent to support this work in our schools. Our school counsellors and Child, Youth, Family Support Workers are key point people in their schools in supporting the mental health of students across the tiers. Given increasing complexity in the mental health needs of our students, as reflected in important indicators such as the Early Development Instrument (EDI), Student Learning Survey, the McCreary Adolescent Health Survey, and our Tier 3 referrals, our district staff are engaging more and more in collaborative school, community, and district efforts. Our approach relies on collective responsibility for all students' mental health as a critical piece of their overall wellness.

**NANAIMO LADYSMITH PUBLIC SCHOOLS  
EDUCATION COMMITTEE  
PUBLIC MEETING  
INFORMATION SHEET**

DATE: November 6, 2024  
TO: Education Committee  
FROM: Laura Tait, Deputy Superintendent  
SUBJECT: Student Learning Survey and  
Ministry of Education and Child Care Data Site

---

### **Background**

The Student Learning Survey has been conducted every year in B.C. public schools since 2001 for Grades 4, 7, 10, and 12 students. It is the only source of province-wide information on students' learning experiences. The data from the survey is used by the Ministry of Education and Child Care, Ministry of Health, districts and schools, and the Representative of Children and Youth, to help improve the well-being of youth in B.C., improve student outcomes, and support school planning and programs.

In 2023, the Student Learning Survey (SLS) is composed of fifty-seven (57) questions for Grade 4, seventy-two (72) questions for Grade 7, and eighty-one (81) questions for Grade 10 and 12.

### **Student Learning Survey 2023-2024**

- Questions are analyzed and presented by grouping 'positive' responses together and representing these as one data point (Positive, Neutral, Negative, Don't know)
- Constructs: Summary themes of questions that are similar or measure things that are similar, not causal in nature; if questions belong to the same construct, it indicates they measure the same underlying attribute or concept, such as 'Belonging'; constructs are more reliable and less error-prone, as summaries of the SLS
- Summary Constructs: composed of constructs capturing similar or related topics; 5 in total: Curriculum, Future Preparation, Interpersonal Skills, School Environment, Wellbeing; they can be used as 'snapshots' to gauge where there may need to be attention/efforts



## Discussion

**Strategic Plan Goal:** Student & Employee Wellness

**Strategic Plan Objective:** Increase the number of students who feel welcome, safe and have a sense of belonging in their school

### Student Learning Survey data that pertain to the Strategic Plan

- School Environment (Summary Construct)
  - Belonging (Construct)
    - Do you feel welcome at your school? (Belonging)
    - Is school a place where you feel like you belong?
  - Safety (Construct)
    - Do you feel safe at school?
  - Adult Support (Construct)
    - At your school, how many adults do you feel care about you?

Question	Total Count 4&7	Positive	Prior Yr Diff	Total Count 10&12	Positive	Prior Yr Diff
NQ16 - Do you feel welcome at your school?	2,044	<b>72.9%</b>	1.6	1,611	<b>69.6%</b>	2.2
S81 - Is school a place where you feel like you belong?	2,031	<b>56.4%</b>	-0.5	1,608	<b>52.1%</b>	1.3
Q22 - Do you feel safe at school?	2,038	<b>77.1%</b>	2.6	1,609	<b>76.6%</b>	1.7
Q26A - At your school, how many adults do you feel care about you (for example, teachers, counsellors, student helpers)?	2,034	<b>63.2%</b>	1.8	1,605	<b>68.9%</b>	2.0

This data will be used during the 2024-25 school year by schools and DLS to provide planning information for the next school year.

### BC Education System Performance Site:

- Overview of BC Public School Data provincially
- Public access to data and reports by school, district or community.
- *Student Satisfaction and Wellness* – Student Learning Survey

<https://studentsuccess.gov.bc.ca/>

<https://studentsuccess.gov.bc.ca/school-district/068>

**Triangulation of Student Data:**

Overall Student Screener: Green / Yellow / Red

In an effort to be more informed around how our students are doing, schools have adopted the practice of using an overall student screener to provide staff with a snapshot to indicate where further inquiry may be required. This original practice is one that our Indigenous Learning Team has been used at secondary for a number of years. The current version of the Screener uses six domains created using a number of sources including: the Child and Adolescent Functional Assessment Scale (CAFAS); Early Developmental Instrument (EDI); the Childhood Experiences Questionnaire (CHEQ) and the former structure created by Indigenous Learning.

Domains for the Overall Student Screener: Green / Yellow / Red

- School Connection
- Academic
- Family/Caregivers
- Healthy Peer & Community Relationships
- Mental Health & Wellness
- Physical Health & Wellness

