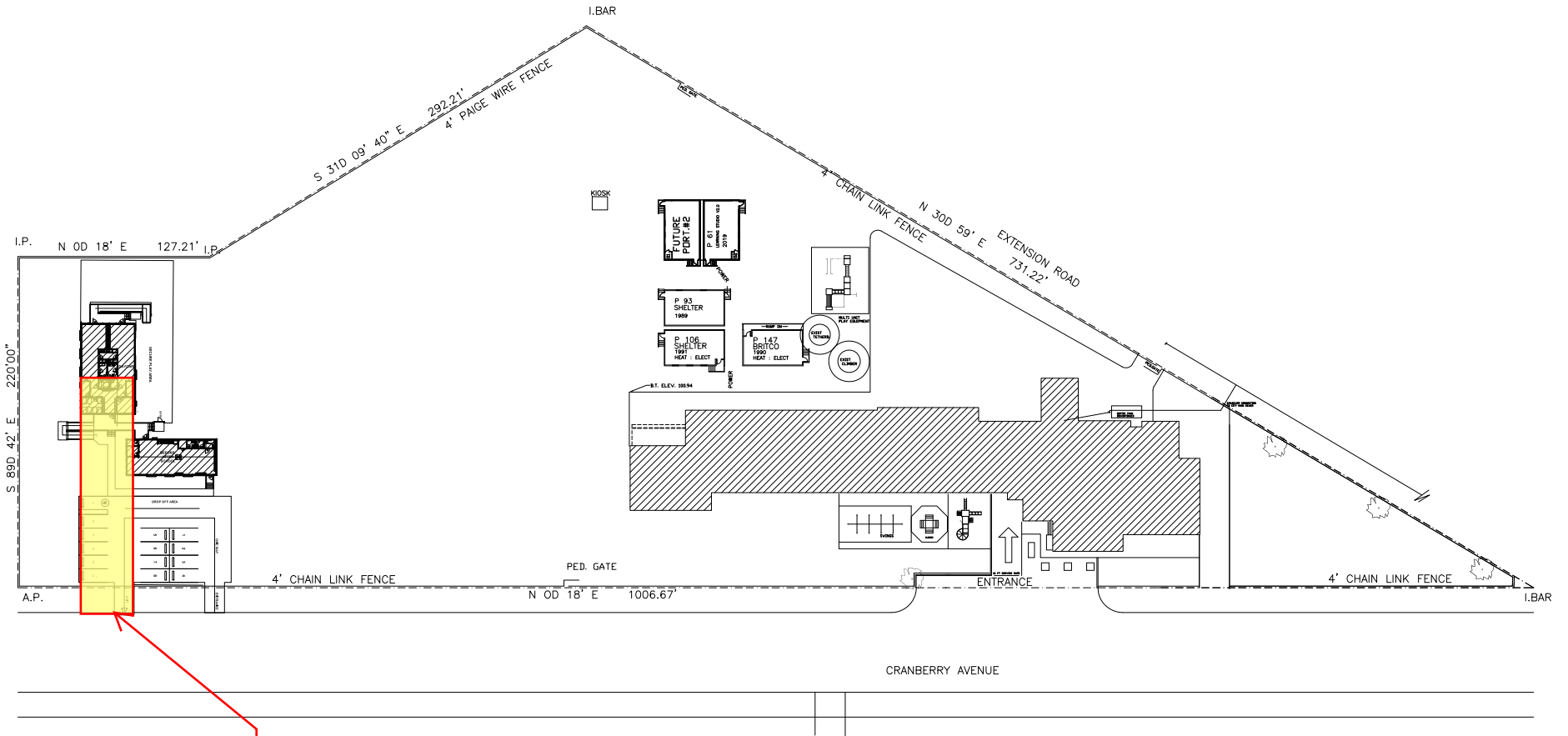


# CHASE RIVER ELEMENTARY SCHOOL

1503 CRANBERRY AVENUE,  
NANAIMO, BC  
V9R 6R7

## LEGAL DESCRIPTION

Legal Description: P.I.D.  
002-972-379, LOT 1, Section 18 &  
19, Cranberry District, Plan 24118



**AREA OF WORK ON  
CHASE RIVER SITE  
PLAN**

322-CHASE RIVER ELEMENTARY SCHOOL  
1503 CRANBERRY AVENUE, NANAIMO, V9R 6R7  
Update: 2022 D.J

